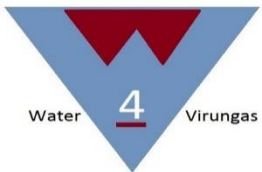


Water supply and IWRM in the transboundary Virungas region

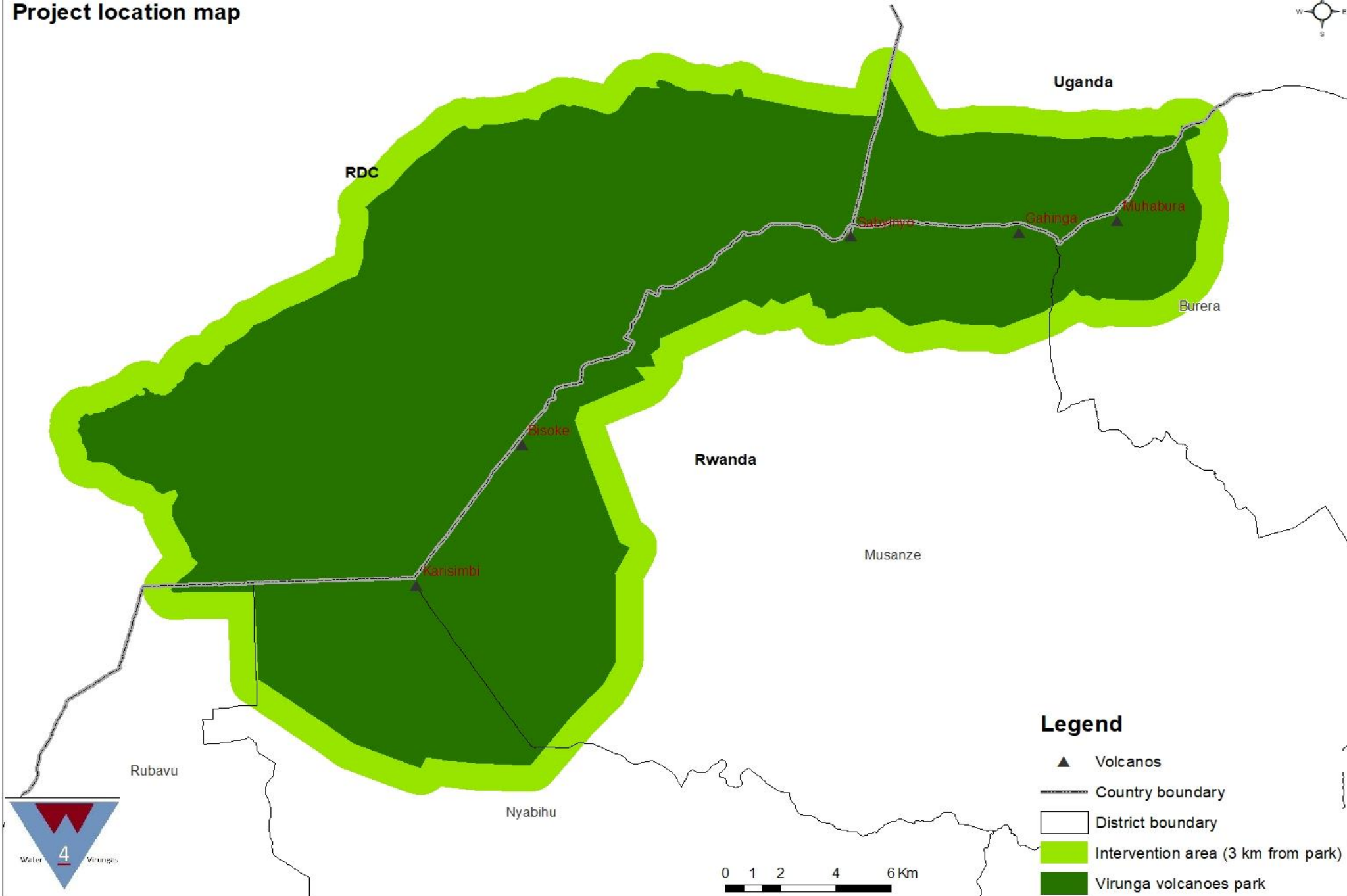
Gertjan Leereveld & Drocelle Musabyimana
Water4Virungas Project
Conference on IWRM, Kigali, 20th March 2019

Introduction: Water4Virungas (W4V) project

- Integrated Water Resource Management (IWRM) program, 4 years, started in 2017
- **The overall objective of W4V is to reduce conflict through increased access to water and improved watershed management in the Virunga area**



Project location map



Legend

- ▲ Volcanos
- Country boundary
- District boundary
- Intervention area (3 km from park)
- Virunga volcanoes park

Water-supply and IWRM challenges within W4V

- A. WASH - Improper management of piped water systems, lack of (clean) water
- B. IWRM – Watershed degradation due to soil erosion.
- C. PARK – Communities fetching water in the park
- D. TRANSBOUNDARY - Due to the landscape/erosion, water flows from Rwanda to DRC



Strategies for addressing the challenges (1)

1. Integrated farm planning (PIP) , an approach that stimulates community-based solutions by creating awareness and trust.

Principal of PIP:

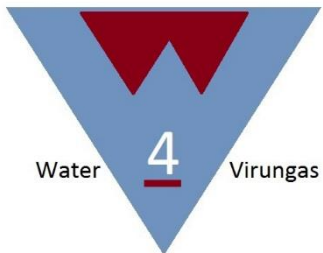
❖ Empowerment

❖ Integration

❖ Collaboration

Success factors of the PIP approach

- ✓ PIP responds to a need
- ✓ PIP focuses on empowerment
- ✓ PIP generates a family vision
- ✓ PIP stimulates integration
- ✓ PIP doesn't use incentives

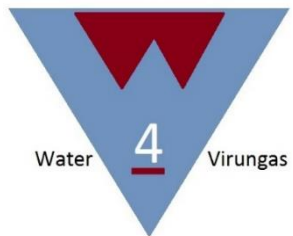


Strategies for addressing the challenges (2)

2. Multi Stakeholder Partnership/Platform (MSP) approach

MSP brings stakeholders together to participate in the dialogue, decision making, and implementation of solutions to common problems/conflicts.

3. Improvement of service delivery and water governance



Improvements related with IWRM and Water supply

Individual RWHT (5 m³)

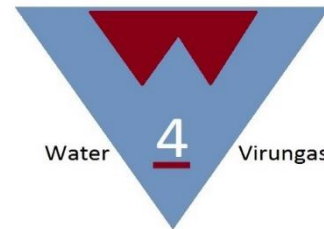


Communal RWHT (30 m³)



Conclusions

- ❖ To decrease water related conflicts, the three different strategies are used (backbone) by W4V in different areas and for different conflicts. This is to aid immediate change where needed and to build sustainable change in this conflict prone area.
- ❖ Local communities are the key stakeholder for addressing water issues



Thanks you

- Gertjan Leereveld, gle@mdf.nl
- Drocelle Musabyimana, dmu@mdf.nl

?? QUESTIONS ??





Ministry of Environment



Rwanda National IWRM Conference

'Leaving no-one behind'



Kingdom of the Netherlands

